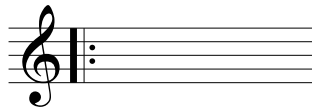


Matching III

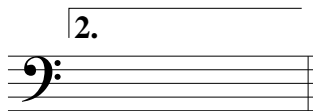
Draw a line connecting the musical term or symbol with its definition.

Definition

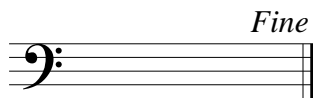


Vivace

—



dolce



fff

—

accelerando

segno

increasing tempo

tenuto

second ending

slowing tempo

tremolo

first ending

fast, lively

half rest

whole rest

backward repeat

fortississimo

sweetly

slow

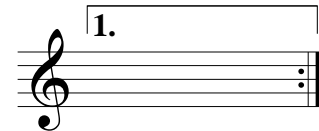
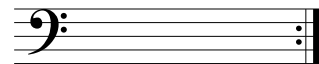
more motion

forward repeat

pianississimo

fine sign

ppp



ritardando

≡

—

piu mosso

Lento

