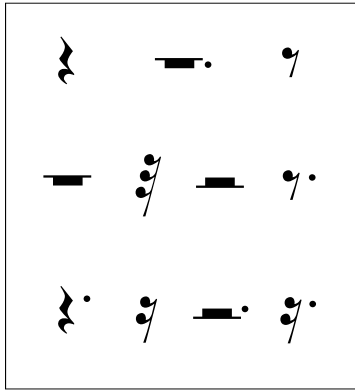


Rest Values - Long to Short

Organize the rest values along the line in order from longest to shortest.



A large diagonal arrow pointing from the bottom-left towards the top-right. The word "long" is written in a bold, italicized font along the bottom-left tail of the arrow, and the word "short" is written in a bold, italicized font along the top-right head of the arrow. Ten horizontal lines are drawn across the page, perpendicular to the arrow, intended for students to place the rest symbols from the box in order of their duration from longest to shortest.