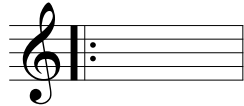


Matching - Repeat Markings

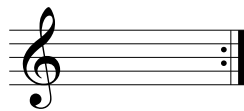
Draw a line connecting the repeat marking or symbol with its definition.

Repeat Marking

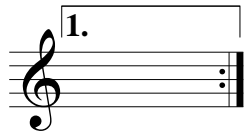
Definition



second ending



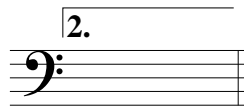
segno sign



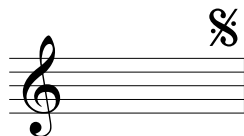
fine sign

D.C. al Fine

first ending



backward repeat



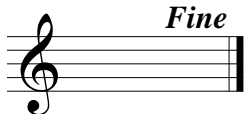
repeat back to the beginning, end at the fine

D.C.

forward repeat

D.S. al Coda

repeat back to the segno, continue to the coda



da capo - repeat back to the beginning

⊕ Coda

ending section of music, literally "the tail"